

# CONNECTION BRACKET

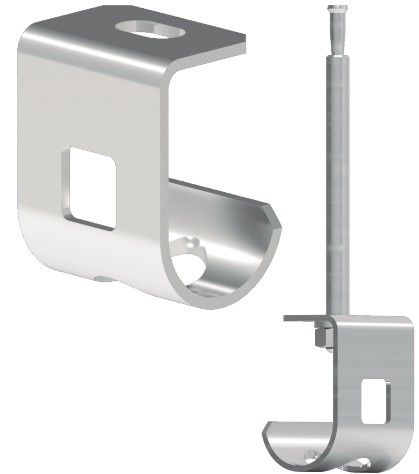
## AECS/MDJ

### Description

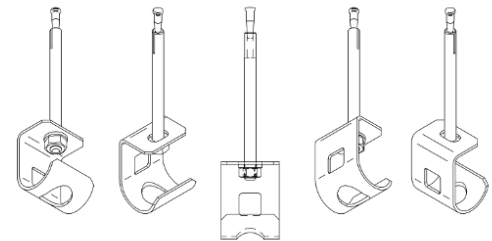
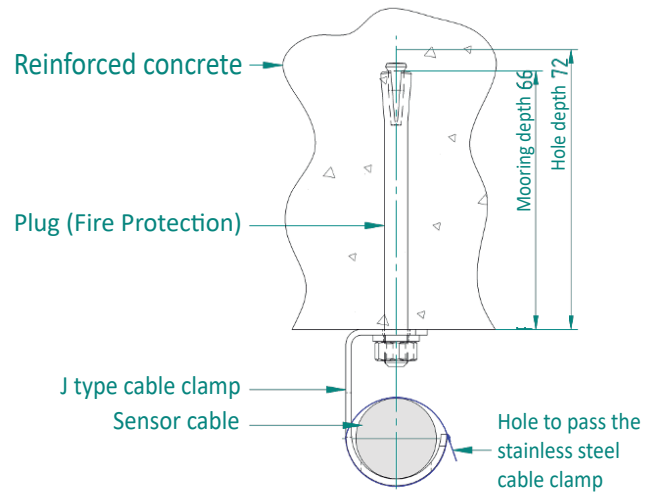
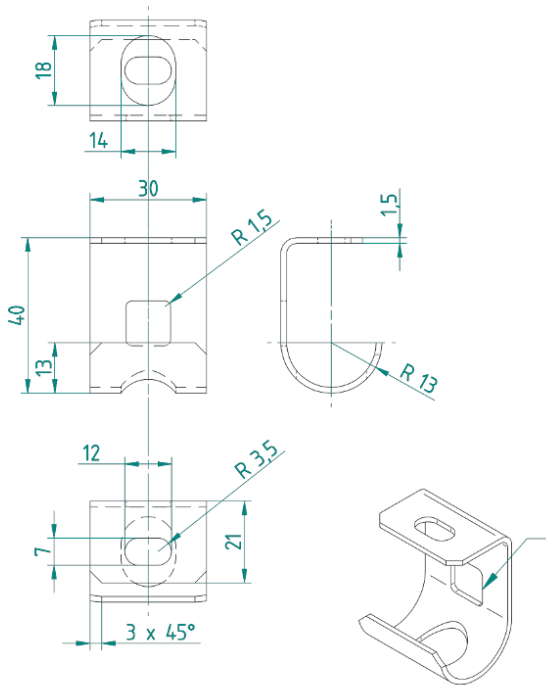
Semi-open stainless steel clamp with stainless steel cable tie for fixing the SEC 15 and SEC 20 sensor cables.

Fixing with stainless steel M6 fire protection pin, washer and nut.

For use with the FECT 201-A4 stainless steel cable tie to secure the sense cable against dropping in the event of fire.



### Dimensions



#### Fixings:

Type	Material N°.	DIN EN
MDJ 40 (KDM-2-LX hv66)	1.4571	X6 CrNiMoTi 17-12-2

#### Necessary accessories (not included in delivery):

Type	N° Article:
3/L Drill bit with stop	Z00354
SWM / H insertion tool (For hammer)	Z00413
Insertion tool SWM-SM 50 (for hole punch)	Z00412

#### Replacement material:

Type	N° Article:
Plug (fire protection) KDM-2-LX hv66 1.4571	Z00414
Cable clamp type j 1.4571	Z00349
Stainless Steel Cable Clamp	Z00360

### TECHNICAL CHARACTERISTICS

Fire protection plug, washer, M6 nut and cable tie.

Anchorage depth: 66 mm,

Material.-Nr.: 1.4571 / DIN EN: X6 CrNiMoTi 17-12-2